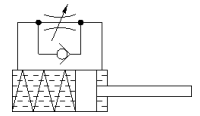
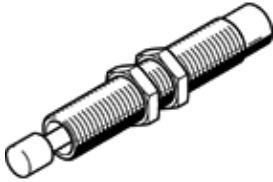


shock absorber DYSW-10-17-Y1F

Part number: 548074

FESTO

Self-adjusting, with progressive characteristic curve.



Data sheet

| Feature | Value |
|---|---|
| Size | 10 |
| Stroke | 17 mm |
| Cushioning | self-adjusting Soft characteristic |
| Assembly position | Any |
| Position detection | No |
| Max. impact speed | 3 m/s |
| Reset time short | 0.2 s |
| Reset time long | 1 s |
| Mode of operation | single-acting pushing action |
| Corrosion resistance classification CRC | 2 - Moderate corrosion stress |
| Ambient temperature | -10 ... 80 °C |
| Cushioning length | 17 mm |
| Max. stop force | 700 N |
| Max. energy consumption per stroke | 8 J |
| Max. energy consumption per hour | 30,000 J |
| Max. residual energy | 0.03 J |
| Reset force | 3.5 N |
| Product weight | 67 g |
| Mounting type | with lock nut |
| Materials note | Free of copper and PTFE Conforms to RoHS |
| Material seals | NBR |
| Material housing | Steel Galvanised |
| Material piston rod | High alloy steel |